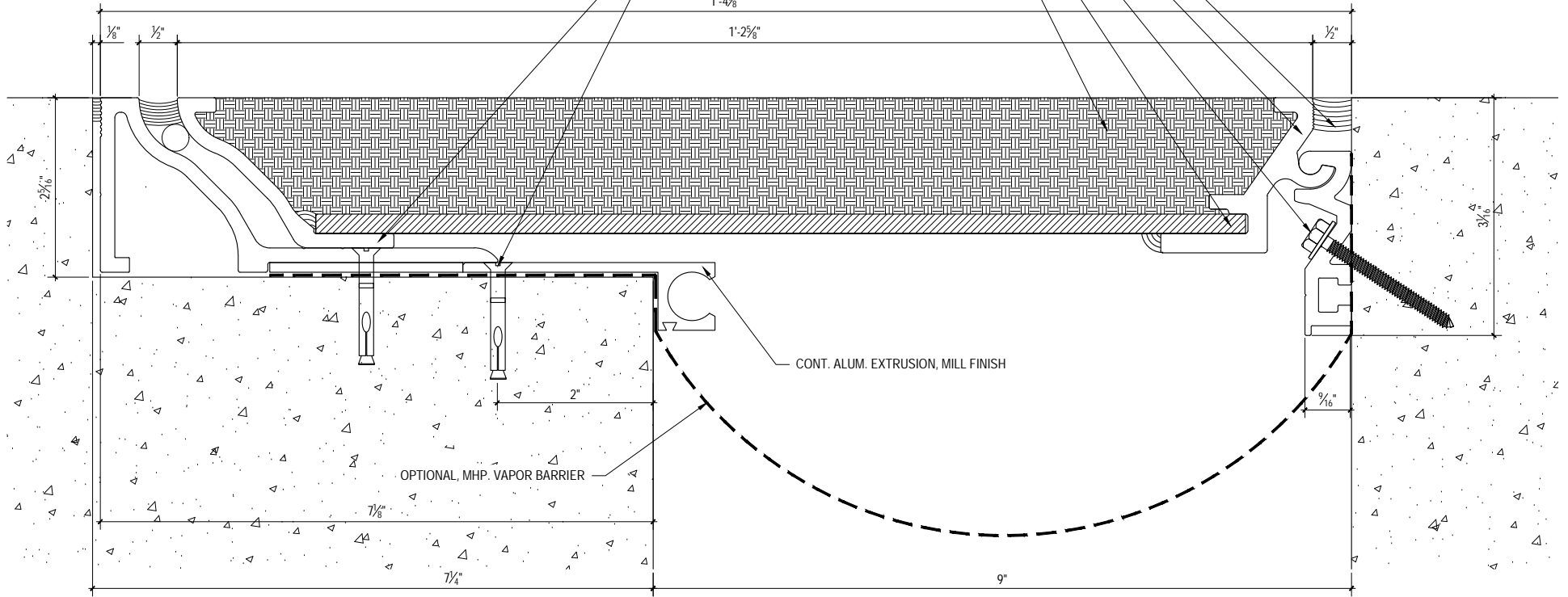


CONT. CAULKING & BACKER ROD, BY INSTALLER  
 CONT. ALUM. BASE/ HINGE EXTRUSION, MILL FINISH  
 HEX. HEAD ANCHORS @ 18" O.C. MAX, BY INSTALLER  
 1/4" ALUM. COVER PLATE, MILL FINISH  
 IN-FILL/ FLOOR FINISH, BY OTHERS

CONT. ALUM. PAN NOSING/ TURNBAR FRAME  
 F.H. ANCHORS @ 18" O.C. MAX, BY INSTALLER

1'-4 1/8"

1'-2 5/8"



CONT. ALUM. EXTRUSION, MILL FINISH

OPTIONAL, MHP. VAPOR BARRIER



**M.H. POWELL & CO., INC.**  
 ARCHITECTURAL SEISMIC EXPANSION JOINT SYSTEMS

2313 YATES AVENUE | PHONE : (323) 887-0037  
 COMMERCE, CA 90040 | FAX : (323) 887-0877  
 WEB : www.mhpowell.net

**MODEL**  
**PUL-9**

FLOOR TO WALL EJC.

PROJECT : \_\_\_\_\_ PROJECT # : \_\_\_\_\_  
 LOCATION : \_\_\_\_\_ DATE : \_\_\_\_\_  
 ARCHITECT : \_\_\_\_\_  
 CUSTOMER : \_\_\_\_\_

PAGE #